



KEY BENEFITS

- Contextual visualization of AppLogic Networks' unique network, subscriber, and QoE network intelligence
- Results-based intelligence and visualization for inline use cases in Network Optimization, Revenue Generation and Assurance
- Single source of truth for all network access types
- Designed to integrate into existing workflows for service providers
- End-to-end visibility allows a holistic approach to solve outcome-based problems

Service providers are faced with a variety of challenges, from technology turns (e.g., cloud and 5G) to increasing application complexity, and consumers who demand more and more from the network. To manage these concurrent challenges, service providers need access to relevant and actionable data to drive their business investment and inline network decisions.

AppLogic Networks offers best-in-class network and application data, which prioritizes quality experience, and highly precise inline actions.

With this foundation, AppLogic Networks' Application and Network Intelligence is powering the next wave of network transformation, enabling service providers to improve QoE for consumers with closed-loop actions and machine learning-based intelligence. Application and Network Intelligence is the underpinning technology across all of AppLogic Networks' solutions and use cases, which are agnostic to network vendors, network architecture, or IT architecture.

APPLIC NETWORKS' ANI PORTAL: VISUALIZED VALUE FROM A SINGLE PANE OF GLASS

The ANI Portal unlocks the ROI of AppLogic Networks' solutions with a holistic network-wide view, including the impact to QoE performance, plan adoption, and fraud levels. With the ANI Portal, service providers have access to contextual use case information by user, device, service, technology, and network access type, aligned with the standard, service provider-defined workflow.

AppLogic Networks' solutions, use cases, and the extracted network intelligence drives the ANI Portal, enabling service providers to focus on transforming their networks to handle factors such as encryption, cloud, and increasing application complexity. Application and Network Intelligence is AppLogic Networks' strategy to enable service providers to leverage automated use cases to meet the always increasing quality expectations of users while maintaining business profitability.

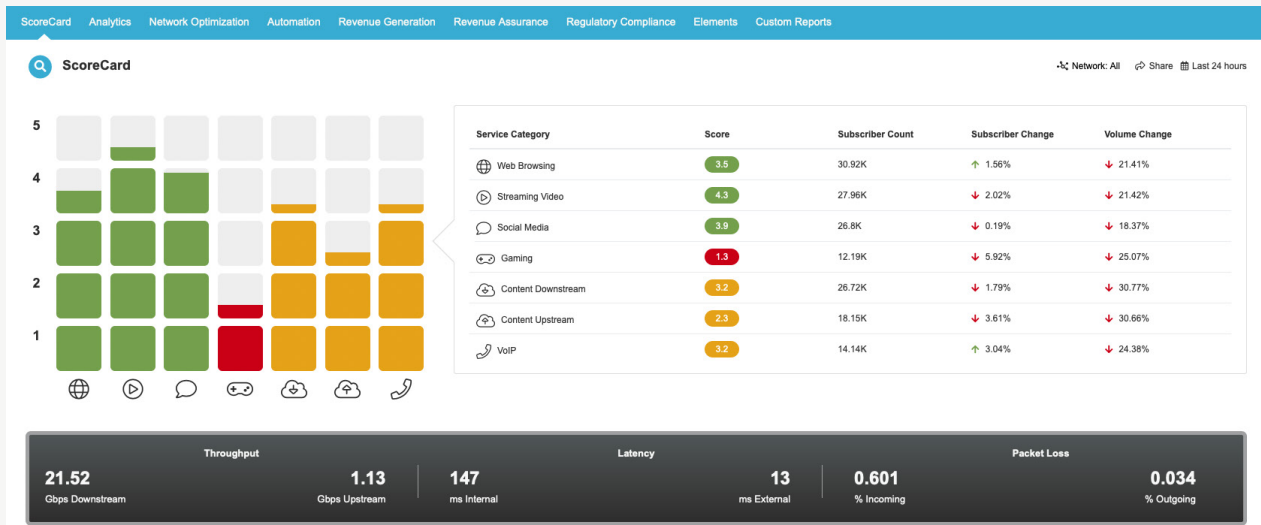
ANI PORTAL OVERVIEW

The ANI Portal provides service providers with real-time visibility into network conditions so that they can analyze and rapidly react to these challenges through automated, and QoE-based use cases.

The ANI Portal delivers clear, macro-level network insights, including QoE metrics for services delivered to enterprise and consumers (**Figure 1**). Further empowering service providers, the ANI Portal visualizes AppLogic Networks' Analytics, Network Optimization, Closed-Loop Automation, Revenue Generation and Assurance solutions and underlying use cases.

Figure 1

Various teams within a service provider benefit from a clear, end-to-end view on how the network is delivering applications and therefore the quality experienced by users



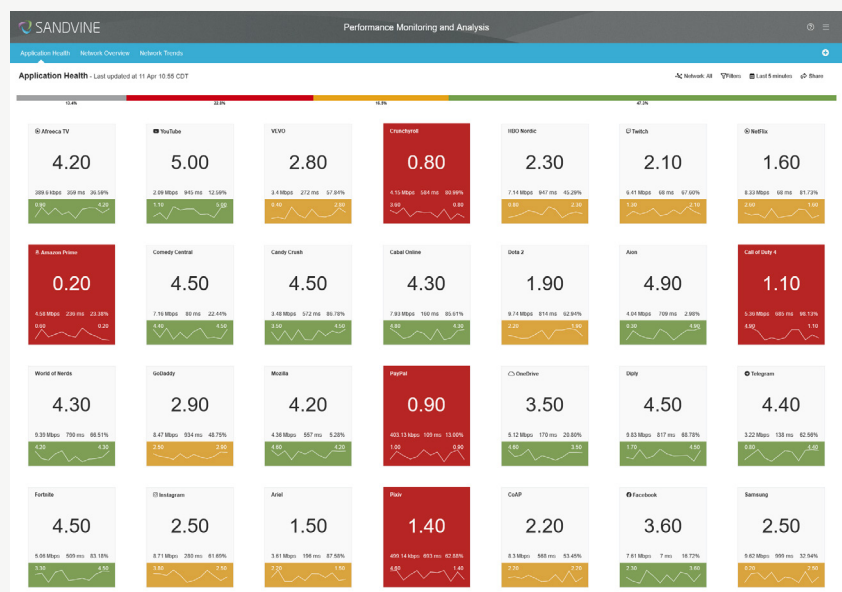
The ANI Portal empowers service providers in their digital transformation and provides an end-to-end view of AppLogic Networks' application QoE intelligence

ANI PORTAL HIGHLIGHTS

- Use case-based visualization and data exploration of AppLogic Networks' network intelligence
- Unparalleled analysis of key performance datasets with out-of-the-box use case dashboards
- Real-time and historical views of AppLogic Networks' Analytics, Network Optimization, and Revenue Generation and Assurance
- Support for both pre-configured analytics dashboards as well as dynamic report creation leveraging the network intelligence contained in AppLogic Networks' Insights Data Storage
- Single-pane view for scalable, carrier-class architecture provides for supporting large scale, geographically distributed deployments in physical, virtual, hybrid, or cloud-based environments (see [Elements Datasheet](#) for more information)

Figure 2

AppLogic Networks' ANI Portal takes an application QoE-focused approach to network monitoring and management



All service providers can benefit from the ANI Portal, and take that critical step towards establishing an agile, automated, phenomena-centric environment. With these insights, the ANI Portal provides out-of-the-box use case dashboards for exploring the intelligence collected, enabling rapid resolution of critical problems and the ability to spot opportunities to generate revenue, improve QoE, reduce cost, and implement surgical actions that will have immediate business impact.

ABOUT APPLOGIC NETWORKS

AppLogic Networks' cloud-based App QoE portfolio helps customers deliver high quality, optimized experiences to consumers and enterprises. Customers use our solutions to analyze, optimize, and monetize application experiences using contextual machine learning-based insights and real-time actions. Market-leading classification of more than 95% of traffic across mobile and fixed networks by user, application, device, and location creates uniquely rich, real-time data that significantly enhances interactions between users and applications and drives revenues. For more information visit <https://www.applogicnetworks.com> or follow AppLogic Networks on X @AppLogic Networks.



USA
5800 Granite Parkway
Suite 170
Plano, TX 75024
USA

EUROPE
Neptunigatan 1
211 20, Malmö
Skåne
Sweden
T. +46 340.48 38 00

CANADA
410 Albert Street,
Suite 201, Waterloo,
Ontario N2L 3V3,
Canada
T. +1 519.880.2600

ASIA
Arliga Ecoworld,
Building-1, Ground Floor,
East Wing Devarabeesanahalli,
Bellandur, Outer Ring Road,
Bangalore 560103, India
T. +91 80677.43333

Copyright ©2025 AppLogic Networks Corporation. All rights reserved. Any unauthorized reproduction prohibited. All other trademarks are the property of their respective owners.

This documentation, including all documentation incorporated by reference herein such as documentation provided or made available on the AppLogic Networks website, are provided or made accessible "AS IS" and "AS AVAILABLE" and without condition, endorsement, guarantee, representation, or warranty of any kind by AppLogic Networks Corporation and its affiliated companies ("AppLogic Networks"), and AppLogic Networks assumes no responsibility for any typographical, technical, or other inaccuracies, errors, or omissions in this documentation. In order to protect AppLogic Networks proprietary and confidential information and/or trade secrets, this documentation may describe some aspects of AppLogic Networks technology in generalized terms. AppLogic Networks reserves the right to periodically change information that is contained in this documentation; however, AppLogic Networks makes no commitment to provide any such changes, updates, enhancements, or other additions to this documentation to you in a timely manner or at all.